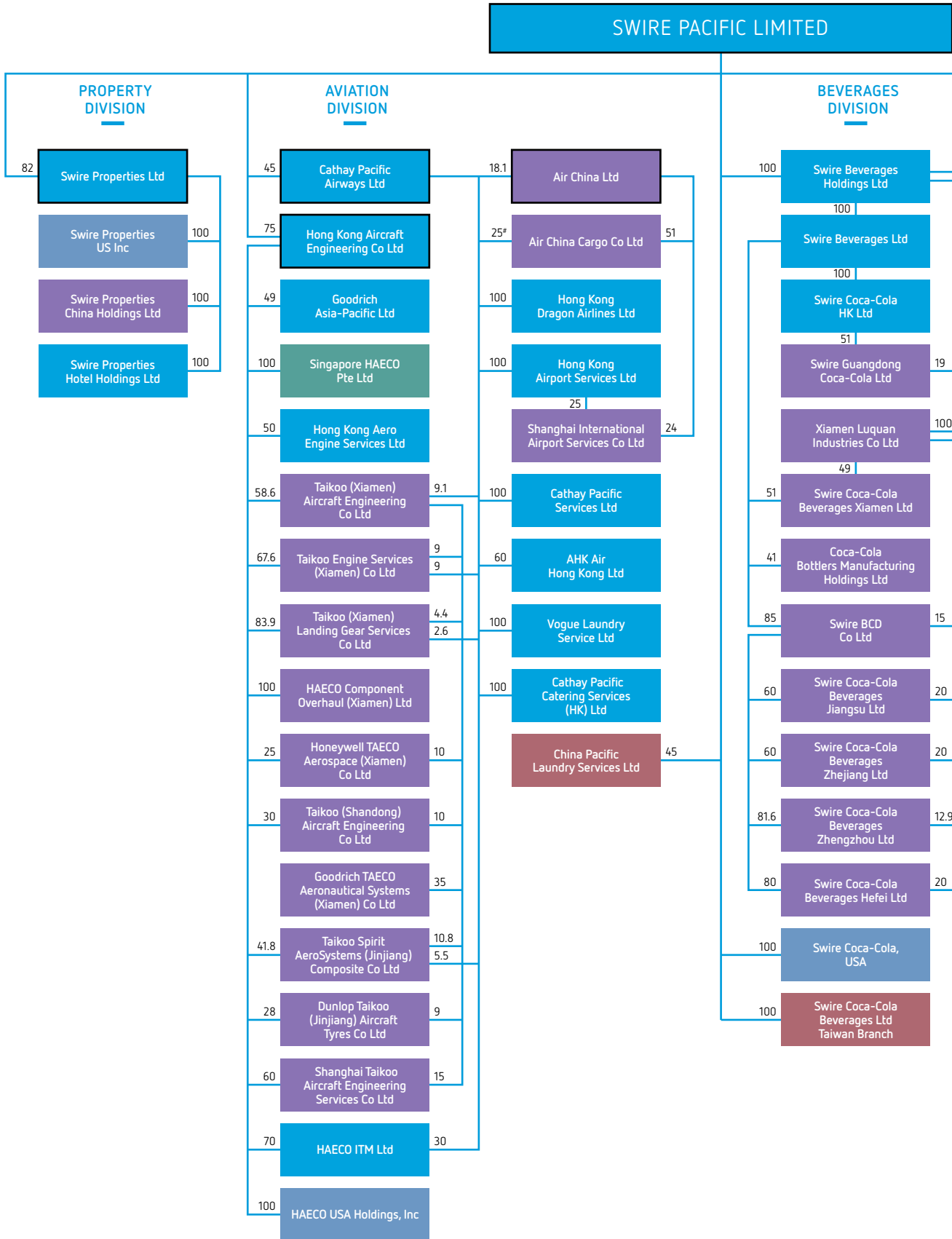
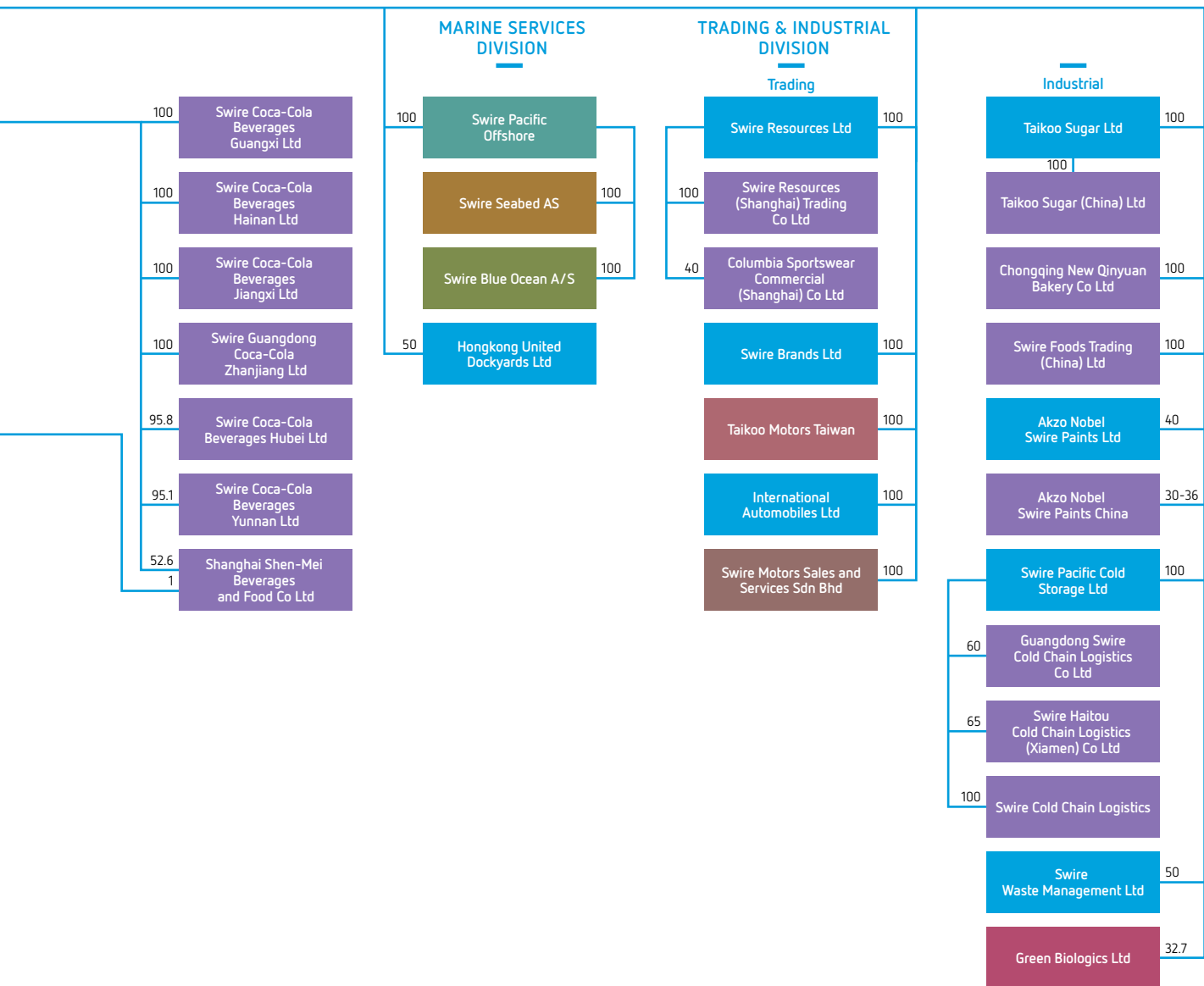


Group Structure Chart





Publicly Quoted	United States of America
Hong Kong	Norway
Mainland China	Denmark
Singapore	United Kingdom
Taiwan	Malaysia

* This organisation chart is for illustrative purposes only and does not represent the legal structure of the Group.

Shareholding held through subsidiary at 25%, another 24% held through an economic interest with total holding at 49%.